



ALUMINIUM

# BIFOLD DOORS

INNOVATIVE, AWARD-WINNING  
BIFOLD DOORS

# SUNFLEX™

## Aluminium folding door systems

Aluminium's incredible strength and lightweight construction make it a highly versatile material. Our range of precision engineered SUNFLEX aluminium bifold doors offer a contemporary, modern look and provide a maintenance free solution. With minimal sight lines, more than 200 different colours and double or triple glazing, this range will meet the demands of your project.



For over thirty years, SUNFLEX has led the global market in the design, development and manufacture of bifold doors. Today they are widely regarded as the most advanced systems available, with each product handmade to the highest quality and featuring a wide range of unique features and system options.

The SUNFLEX range of aluminium bifold doors features:

- **SF55** - an award-winning bifold door that has proven to be a best-seller, thanks to a combination of slender appearance, unrivalled configuration options and innovative technology.
- **SF75** - no aluminium bifold door system can achieve better thermal performance standards than the SF75 with the system capable of incredibly low U-value from just 0.8W/m<sup>2</sup>K, ideal for ultra-thermally efficient new-builds and renovations

Each system is fitted with unique running carriages that mount to the door frame rather than the hinge, which provides the smoothest operation, enhanced security and neat visual appearance. Panels can be made up to 1,200mm wide and 3,500mm high.

In addition the SF55 and SF75 are also available with internal timber cladding, providing the natural beauty of wood on the inside face of the door with maintenance free aluminium on the outside. Please request a copy of our timber-clad bifold door brochure for more information.



5 panel SF55 with corner post | RAL 7016 Anthracite grey | 3-left, 2-right | low threshold track



See our bifold doors at

- ▶ The Building Centre in Central London
- ▶ Our Comprehensive Showroom in Norwich

6 panel SF55 with gable | RAL 7016 Anthracite grey | 3-left, 3-right | low threshold track

# SUNFLEX SF55

## Award-winning aluminium bifold door



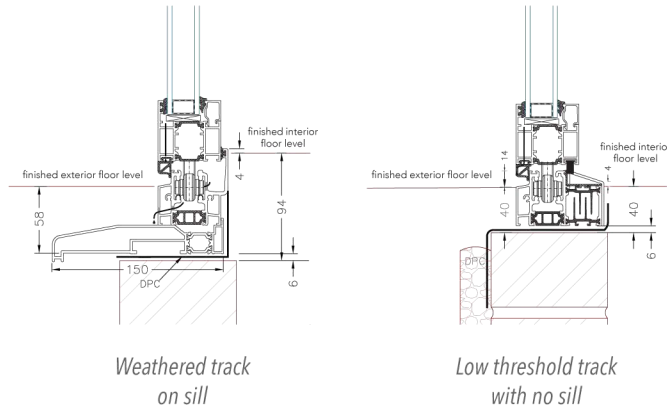
Our most popular bifold door system, the SF55 has been designed and developed to shape the future of the folding door market.

Not only does it provide a compact profile depth of just 55mm, in addition to narrow sight lines; it is packed full of unique features and offers the widest range of size and configuration options available.

**Flexibility in design** – the system may be folded to the left or the right (or both), open to the inside or outside.

It can have panels all folding the same way or split with a number folding to each side. The system can be double or triple glazed, utilised as a single door, French doors and from 2-panel to 22-panel bifold door on three different track options. It can also include a moveable corner post to create an eye-catching complete opening.

### SF55 Track options



### SF55 U-Values

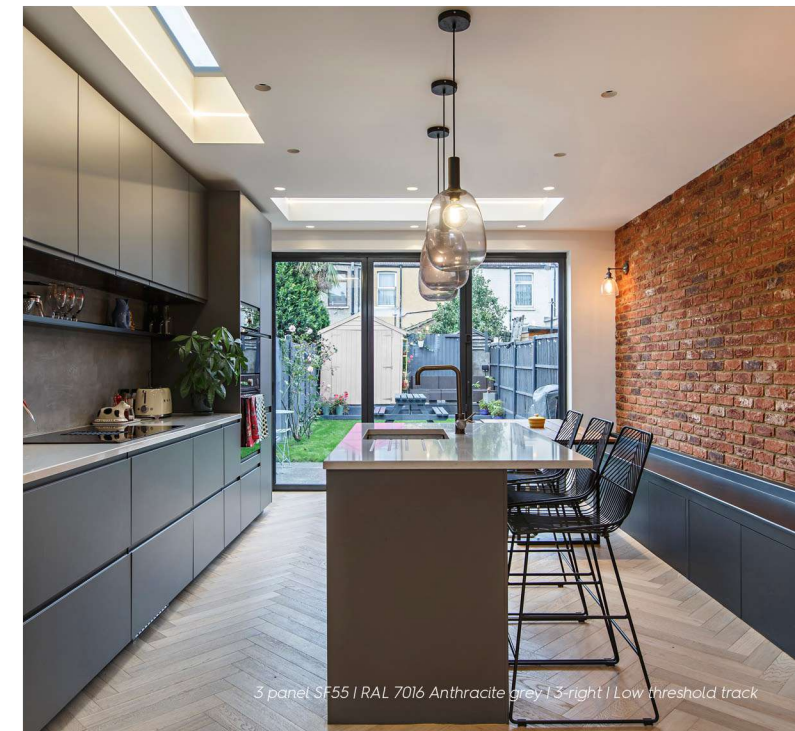
Glazing option	Overall system U-value
Double glazed	from 1.4 W/m <sup>2</sup> K
Triple glazed	from 1.1 W/m <sup>2</sup> K

## SF55 KEY FEATURES

- **Award-winning bifold doors**  
Named Build It magazine's 'Best Glazed Doors'.
- **Capable of complex configurations**  
Achieves even the most complex of configurations, including moveable corner posts to create stunning uninterrupted open corners.
- **Stunning appearance**  
Ultra-slim 115mm sightlines and narrow 55mm frame depths with panels up to 1,200mm wide and up to 3,500mm high and a choice of either low-threshold or fully weathered tracks.
- **The most weathertight bifold doors available**  
Independently tested to industry leading weather performance standards of 900Pa water tightness and 600Pa air permeability thanks to continuous interlocking triple rebated gaskets.
- **Innovative features**  
Unique panel catch holds first door in place whilst exclusive stacking clip technology secures system when doors are fully opened. Unique part-vent position allows for doors to provide ventilation without having to be opened.
- **Unrivalled quality**  
Designed with more than 35 years of folding door experience to offer complete peace of mind.
- **Security as standard**  
Manufactured with multi-point locking to meet the requirements of PAS 24:2016 and Secured by Design's police preferred specification for security.



5 panel SF55 | RAL 7015 Slate grey | 5-left | Low threshold track



3 panel SF55 | RAL 7016 Anthracite grey | 3-right | Low threshold track



Three sets of SF55 | DB703 textured | Low threshold tracks

### SF55c timber-clad bifold door

Also available with internal timber cladding to provide the natural beauty of wood on the inside face of the doors.

*"Opening up the entire corner of the extension with our bifold doors is easily my favourite bit of the entire project and it is so easy to do. The view into the garden and over the fields is incredible"*

Mrs Keane, Suffolk



6 panel SF55 with corner post | RAL 7015 slate grey | 3-left, 3-right | weathered track

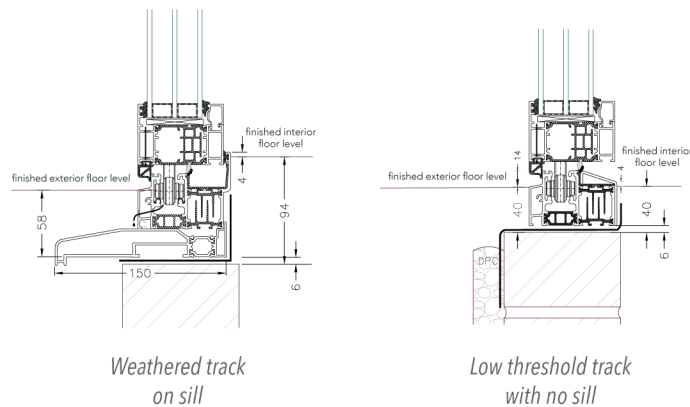
# SUNFLEX SF75

Ultra thermally efficient aluminium bifold doors with industry leading weather protection

The SUNFLEX SF75 bifold doors have been specifically designed to offer the best in thermal efficiency – an extremely low U-Value, eco-friendly folding door system. This market leading system provides the lowest in CO2 emissions associated with reduced energy consumption and considerable savings in heating bills.

**Designed for efficiency** – a unique bifold door system, specifically designed to accommodate a triple glazed sealed unit. The advanced engineering and clever technology enables the system to perform to the highest levels of thermal efficiency, as well as maintaining the stunning visual appearance, slim sight lines and configuration options of the award-winning SF55. Unlike competitors’ systems that use the same profile to accommodate double glazing and triple glazing, the SF75 has been designed and developed specifically to offer the ultimate levels of performance and the flexibility for everyday use.

## SF75 Track options



## SF75 U-Values

Glazing option	Overall system U-value
Double glazed	from 1.1 W/m <sup>2</sup> K
Triple glazed	from 0.8 W/m <sup>2</sup> K

## SF75 KEY FEATURES

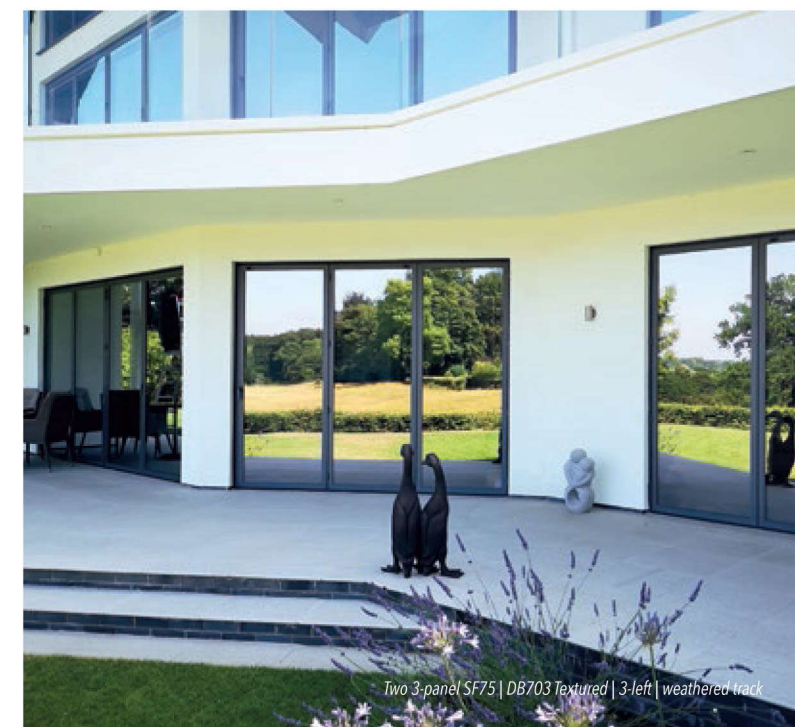
- Unrivalled performance**  
 An industry leading combination of advanced thermal performance (U-value from 0.8W/m<sup>2</sup>K) with unrivalled weather performance (900Pa water tightness and 600Pa air permeability) to severe weather rating standards.
- Stunning appearance**  
 Ultra-slim 115mm sightlines and 75mm frame depths designed to accommodate a triple-glazed unit. Panels sizes up to 1,200mm wide and up to 3,500mm high with a choice of either low-threshold or fully weathered tracks. Can be used to create open corners with integrated moveable corner post.
- Security as standard**  
 Manufactured with multi-point locking to meet the requirements of PAS 24:2016 and Secured by Design’s police preferred specification for security.
- Innovative features**  
 Unique panel catch holds first door in place whilst exclusive stacking clip technology secures system when doors are fully opened. Unique part-vent position allows for doors to provide ventilation without having to be opened.
- Unrivalled quality**  
 Designed with more than 30 years of folding door experience to offer complete peace of mind.

## SF75c timber-clad bifold door

Also available with internal timber cladding to provide the natural beauty of wood on the inside face of the doors.

*“When we were choosing doors for our home the SUNFLEX SF75 was the only system we came cross that was specifically designed for triple glazing which was crucial for our eco-build project”*

Mr Hannant, Norfolk



6-panel SF75 | DB703 Textured | 3-left, 3-right | weathered track

Two 3-panel SF75 | DB703 Textured | 3-left | weathered track

# Art Deco bifold doors

## Steel-look aluminium heritage folding doors

Designed utilising the SF55 system, heritage bifold doors combine traditional Art Deco style with the latest in modern thermal performance and security standards.

When closed the doors match the appearance of steel doors, yet when stacked to one end they create a stunning contemporary opening - perfect for a period renovation or a stylish new-build home.



# Open corner bifold doors

## Create panoramic floating corner designs

Available utilising either the SF55 or SF75 systems, the ability to create completely panoramic views out by opening up the entire corner of a room is a stunning addition to any project.

Designed with an integrated locking corner post, the panels stack back to create a completely open corner where the ceiling appears to float over the aperture.



# Bifold windows

## Completely open window designs

Bifold windows are popular option for completely opening up an aperture, whether that be at ground floor level to create a stunning connection between kitchen and patio for that perfect entertaining space; or as part of a loft-conversion to maximise the views over the rooftops.

They can even be incorporated alongside a set of bifold doors to create a real 'wow' factor design.



# Curved bifold doors

## Open up contemporary curved structures

Ideal for modern homes with sweeping curves, curved (or faceted) bifold doors are available in either inwards (concave) or outwards (convex) curves.

The advanced engineering of the SUNFLEX folding door systems stand out from every other folding door on the market, enabling them to turn an initial idea for curved glazing into a practical and achievable solution.



Finger safe gaskets



Integrated Venetian blinds option



Unique in-line handle design



Patented antiSLAM panel catch



Exclusive stacking clip technology



Industry-leading weather protection



Weathered track



Low threshold track

# A unique range of custom made features, options and finishes

We have chosen three of our most popular finishes as standard stocked colours for bifold doors, which are Graphite Black RAL 9011 matt finish, Slate Grey RAL 7015 matt finish and Anthracite Grey RAL 7016 matt finish.

To truly personalise your doors you can choose from one of more than 200 bespoke RAL Classic colours in a range of finishes.

There is even the option to have different colours on the interior and exterior sides of the doors, which is perfect if you are trying to match the doors to your interior décor and exterior finishes.



6 panel SF55 | Dual colour | 3-left, 3-right | Low threshold track

## Complete glazing solutions, whatever your project...

Award-winning bifold doors, sliding doors and glazing solutions - all made to fit your home perfectly.

Transforming your home needs an experienced and safe pair of hands, so choosing the right company to work with is important. At IDSystems, we're the market leader in providing multi-award winning glazing solutions for all types of projects - extensions, renovations, self-builds and complete new homes. We guarantee the highest standards of advice, build quality, design and bespoke installation for your complete peace of mind. As a family business founded in 2000, we've built an outstanding reputation for quality, service, expertise and some of the most exciting and innovative designs. From your very first contact with us, you'll know that you're dealing with an industry leader. From our initial designs and technical advice to liaison with architects and builders, creating working CAD drawings and the logistics of final installation, our own staff will be with you every step of the way.





sliding doors



bifold doors



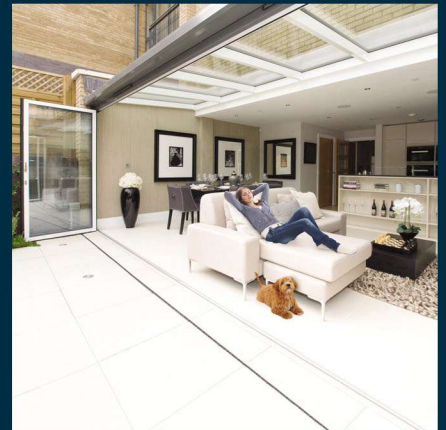
slide & turn doors



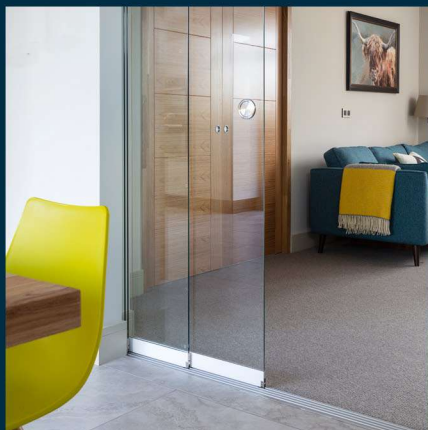
heritage doors



aluminium windows



glass roofs



internal glazing



front doors



glass balustrades

**IDSystems**  
innovative glazing

t 01603 408804 e info@idsystems.co.uk

B2 Rhombus Park Diamond Road Norwich NR6 6NN

[www.idsystems.co.uk/bifold-doors](http://www.idsystems.co.uk/bifold-doors)

See our **bifold doors** at

- ▶ **The Building Centre** in Central London
- ▶ **Our Comprehensive Showroom** in Norwich

