



SLIDING DOORS

AWARD-WINNING, ULTRA SLIM
SLIDING DOOR SYSTEMS

See our sliding doors at

- ▶ The Building Centre in Central London
- ▶ Our Showroom in Norwich
- ▶ Selfbuild Education House in Bicester



3 panel theEDGE2.0 | RAL 9011 Graphite black | OXX | triple track

IDSystems sliding door systems



Our highly engineered sliding doors offer the best of British manufacturing and design and take the humble term 'patio doors' to the highest possible level.

The ability to transform homes by maximising the amount of light; whilst prioritising the security, performance and weather tightness of the systems; is at the heart of our versatile and impressive sliding door range.

Our technically advanced range extends from a single panel sliding door that slides into a pocket between walls, to the Grand Slider II on a triple track up to 24 metres wide. theEDGE2.0, our award-winning ultra-slim sliding door system, is designed to offer a minimal contemporary 20mm profile, whilst offering the heavy duty capability to move large-sized glass effortlessly.

We offer the widest range of system options, a multitude of configuration layouts and the ability to completely open up corners - all designed and manufactured with the quality you would expect from IDSystems.



First floor: 2 panel Grand Slider II | RAL 7016 Anthracite grey | 2-right | single track
Ground floor: 5 panel Grand Slider II | RAL 7016 Anthracite grey | 3-left, 2-right | twin track

theEDGE2.0



Award-winning, ultra-slim aluminium sliding doors

The most advanced product in the IDSystems sliding door range is theEDGE2.0, our ultra-slim sliding door system with incredibly thin intermediate sight lines of just 20mm.

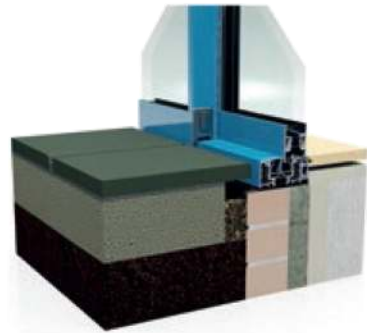
The advanced technology of this sliding door system has enabled us to reduce the frame width and depth, ensuring the doors appear slim when viewed from any angle - all whilst ensuring smooth operation and ease of use.

The large glass panels and slim sight lines are perfect for any project, whether you are in a rural location and wanting to make the most of the views or an urban spot looking to maximise the amount of light you let in.

Versatility in design - with different configurations, bespoke sizes and a vast palette of colours to choose from, this sliding door system can be tailored to suit the most demanding project needs.

Available in a range of track options, from 2 metres to 24 metres wide and up to 3m high, theEDGE2.0 has been designed to offer the perfect combination of aesthetic beauty and everyday practicality; at the same time as maintaining the high security, severe weather rating and reliability our products are renowned for.

theEDGE2.0 example track option



Example of theEDGE2.0 with no sill showing internal and external flush floor detail

theEDGE2.0 U-values

Glazing option	Overall system U-value
Double glazed	from 1.2W/m ² K
Triple glazed	n/a



3 panel theEDGE2.0 | RAL 9011 Graphite black | XXO | triple track



3 panel theEDGE2.0 | RAL 7022 Umbra grey | OXX | triple track

KEY FEATURES

- **Award-winning**
The system was named Build It magazine's 'Best Glazed Doors'.
- **Intermediate sight lines of just 20mm**
A truly amazing slim sight line for sliding doors, which results in an incredible look.
- **Sleek frame**
Aluminium profile remains close to the glass, maintaining a truly slim sight line from all angles.
- **Flush stacking panels as standard**
One panel will slide completely behind the next.
- **Extremely versatile**
Panel widths from 800mm to 3000mm wide and up to 3000mm high - dependent on glass weight.
- **Secured by Design™**
Designed and installed to Police preferred specification.
- **PAS 24:2016**
theEDGE meets and exceeds the requirements of Part Q of Building Regulations.
- **Advanced engineering**
Providing stunning appearance, straightforward installation and effortlessly smooth running.
- **Severe weather rating**
Independently tested to 600Pa air permeability and 300Pa water tightness.
- **Lift and Slide option**
Allows doors to be secured in place while partially opened.
- **Open corner designs**
Moveable corner post allows enables a corner of a room to be completely opened up.
- **High security multi-point locking**
Containing four espagnolette locks and one claw lock all operated with a single turn from waist height.
- **Available in over 200 colours**
The choice is endless, allowing you to tailor the system to your design.
- **Multiple configurations available**
With twin and triple track options, tell us what you require and it is made to your specification.
- **A range of handle options**
Colour coded D handles as standard or upgrade to one of our hugely popular feature handles, available in stainless steel or powder coated in standard colours.
- **Flush track detail**
To provide a Part M compliant level threshold, with the added advantage of not compromising the system's excellent weather rating.
- **Colour coded tread plates**
Cover unused tracks with integral track cover plates.



3 panel theEDGE2.0 | RAL 7022 Umbra grey | OXX | triple track

Grand Slider II

Hugely popular aluminium sliding doors

Why limit yourself to standard-sized patio sliding doors? This heavy-duty, twin or triple track, thermally broken aluminium sliding door system enables you to create large exterior openings, maximising glass area and minimising framework. This truly is the giant of sliding doors.

With such a well-engineered sliding door system, you can be assured of the highest security, a severe weather rating and smooth, effortless operation.

Versatility in design – the sliding door system is very versatile. It is possible to specify which panels are to be fixed - where other panels can slide behind - or to have all panels sliding, or even an extended track running parallel behind a wall or fixed screen so that the panel slides completely out of sight and provides a 100% clear opening.

Grand Slider II example track option



Example of Grand Slider II with sill showing internal and external flush floor detail

Grand Slider II U-values

Glazing option	Overall system U-value
Double glazed	from 1.2W/m ² K
Triple glazed	n/a

KEY FEATURES

- Popular 83mm sight lines
Panels interlock when closed.
- Extreme panel size capability
Heights of 3000mm and total widths of over 20 metres can be accommodated.
- Moveable corner posts
With extended tracks offering 100% clear opening.
- Integrated, external and/or internal additional reinforcing sections available
This makes even the largest panels suitable for the harshest conditions without increasing the sight line.
- Recessed level threshold
With no compromise on weathering.
- Lift and Slide option
Allows doors to be secured in place while partially opened.
- Secured by Design™
Designed and installed to Police preferred specification.
- PAS 24:2016
The Grand Slider II meets and exceeds the requirements of Part Q of Building Regulations.
- Advanced engineering
Providing stunning appearance, straightforward installation and effortlessly smooth running.
- Severe weather rating
Independently tested to 600Pa air permeability and 300Pa water tightness.
- High security multi-point locking
Containing four espagnolette locks and one claw lock all operated with a single turn from waist height.
- A range of handle options
Colour coded D handles as standard or upgrade to one of our hugely popular feature handles, available in stainless steel or powder coated in standard colours.
- Extremely versatile
Panel widths from 800mm to 3000mm wide can be incorporated - dependent on glass weight.
- Colour coded tread plates
Cover unused tracks with integral track cover plates.



4 panel Grand Slider II | RAL 7048 Pearl mouse grey | XXXP | triple track



6 panel open corner Grand Slider II | RAL 9011 Graphite black | OXXXXX | triple track



5 panel Grand Slider II | RAL 9007 Grey aluminium | PXXXX | twin track



3 panel Grand Slider II | RAL 7016 Anthracite grey | PXX | twin track



5 panel Grand Slider II | RAL 7016 Anthracite grey | PXXXX | twin track

Pocket sliding doors

Trend-setting doors that slide completely into a pocket

One of the fastest growing trends, our innovative pocket sliding doors are capable of creating a complete opening by sliding on an extended track into a pocket in the wall.

Available with either theEDGE2.0 or Grand Slider II panels and in a wide range of configurations, pocket sliding doors are ideal for breaking down the boundaries between inside and out, providing an ultra-contemporary addition to an extension or self-build home.

Whichever system you opt for our pocket sliding doors carry all the security, performance, accreditations and aesthetic appeal of our standard sliding doors.

KEY FEATURES

- **Choose your system**
Can be designed utilising either of our sliding door products - theEDGE2.0 or Grand Slider II.
- **Multiple configurations**
From single panel doors sliding one way into a pocket to triple-track systems with doors that slide into pockets at both ends.
- **Large openings achievable**
With panel sizes of up to 3m wide and openings up to 18m in total, our pocket sliders are perfect whatever your project.
- **Tidy finish**
Our unique cover plate is incorporated into design to provide tidy finish when doors are slid into pocket.
- **Completely flush track**
Our twin and triple tracks can be recessed into the floor to provide a seamless transition between inside and out without compromising the weather performance of the doors..
- **All the benefits**
Complete with all the security, aesthetic and performance benefits of our standard sliding doors.



6 panel open corner Grand Slider II | RAL 7016 Anthracite gray | OXXXO1 triple track



3 panel theEDGE2.0 sliding into pocket
RAL 9006 White aluminium | WXXX | triple track

Open corner sliding doors

Create panoramic floating corner designs

Available as an option with either theEDGE2.0 or Grand Slider II, our stunning open corner designs add a real 'wow' factor to any home, whilst allowing incredibly panoramic views out.

The panels slide back to create a completely open corner where the ceiling appears to float over the aperture. They can even be integrated with a pocket door system to really turn heads!

KEY FEATURES

- **Panoramic views**
Enables you to open up an entire corner of a room to the outside.
- **Openable corners**
An integrated moving corner enables the doors to be locked securely when closed.
- **Flexible design**
Can be designed with multiple panel options either side of the corner, from a single panel sliding into a pocket in the wall to a large 12m wide 4-panel design.
- **Security as standard**
Offers the same multi-locking security standards as a conventional sliding door configuration.
- **Extremely versatile**
Panel widths from 800mm to 3000mm width and up to 3000mm high (dependent on glass weight).
- **Customise your doors**
Available with the same colour and hardware options as theEDGE2.0 or Grand Slider II doors.
- **Flush floor detail**
Capable of achieving a flush track finish between inside and out.



Easy smooth operation



Large glass panels



Feature handles
Available in stainless steel or standard colours



Colour coded D handle



Integral recessed handle



Flush stacking



Track cover detail



Open corners

A unique range of custom made features, options and finishes

Colours and finishes

We have chosen three of our most popular finishes as standard colour finishes - Anthracite Grey RAL 7016 matt, Slate Grey RAL 7015 matt and Graphite Black RAL 9011 matt.



Alternatively you can choose to personalise your doors with a choice of one of more than 200 optional colours including the full RAL Classic range and the popular DB703 textured finish.

Handles

Our range of sliding door handles is now bigger than ever. All of our sliding doors come with our round or rectangular shaped feature handles in stainless steel or colour matched D-shaped handles as standard.

For those choosing standard colour frames there is also the option to upgrade to one of our feature handles in a standard colour finish.



Single panel Grand Slider II integrated with glass-to-glass corner window | RAL 7016 Anthracite grey | XO | twin track

Complete glazing solutions, whatever your project...

Award-winning bifold doors, sliding doors and glazing solutions - all made to fit your home perfectly.

Transforming your home needs an experienced and safe pair of hands, so choosing the right company to work with is important. At IDSystems, we're the market leader in providing multi-award winning glazing solutions for all types of projects - extensions, renovations, self-builds and complete new homes. We guarantee the highest standards of advice, build quality, design and bespoke installation for your complete peace of mind. As a family business founded in 2000, we've built an outstanding reputation for quality, service, expertise and some of the most exciting and innovative designs. From your very first contact with us, you'll know that you're dealing with an industry leader. From our initial designs and technical advice to liaison with architects and builders, creating working CAD drawings and the logistics of final installation, our own staff will be with you every step of the way.





sliding doors



bifold doors



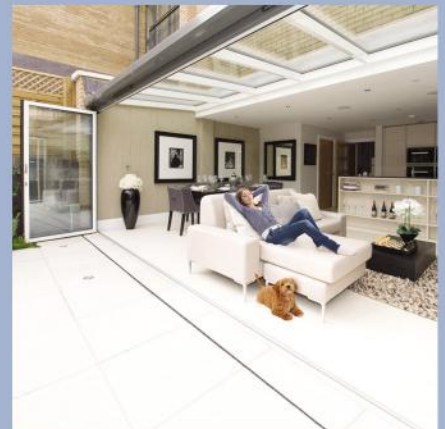
slide & turn doors



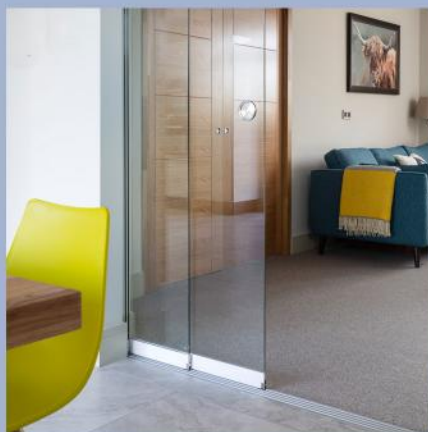
heritage doors



aluminium windows



glass roofs



internal glazing



front doors



glass balustrades


IDSystems
innovative glazing

t 01603 408804 f 01603 258648 e info@idsystems.co.uk

B2 Rhombus Park Diamond Road Norwich NR6 6NN

www.idsystems.co.uk/sliding-doors

See our **sliding doors** at

- ▶ The Building Centre in Central London
- ▶ Our Comprehensive Showroom in Norwich
- ▶ Selfbuild Education House in Bicester

